

This is the two test I do with the DBISAM server

### First test (Default configuration)

1. I install the service with this commande line :

C:\dbisam\stdsrc\ver4\b2006\server\dbsrvr\dbsrvr.exe /install

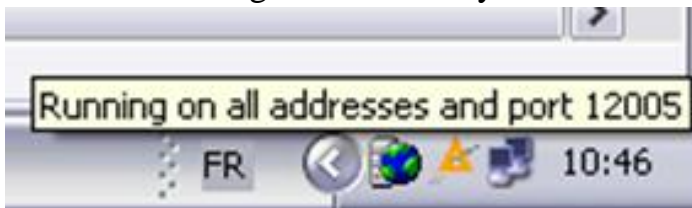
I have this message box :



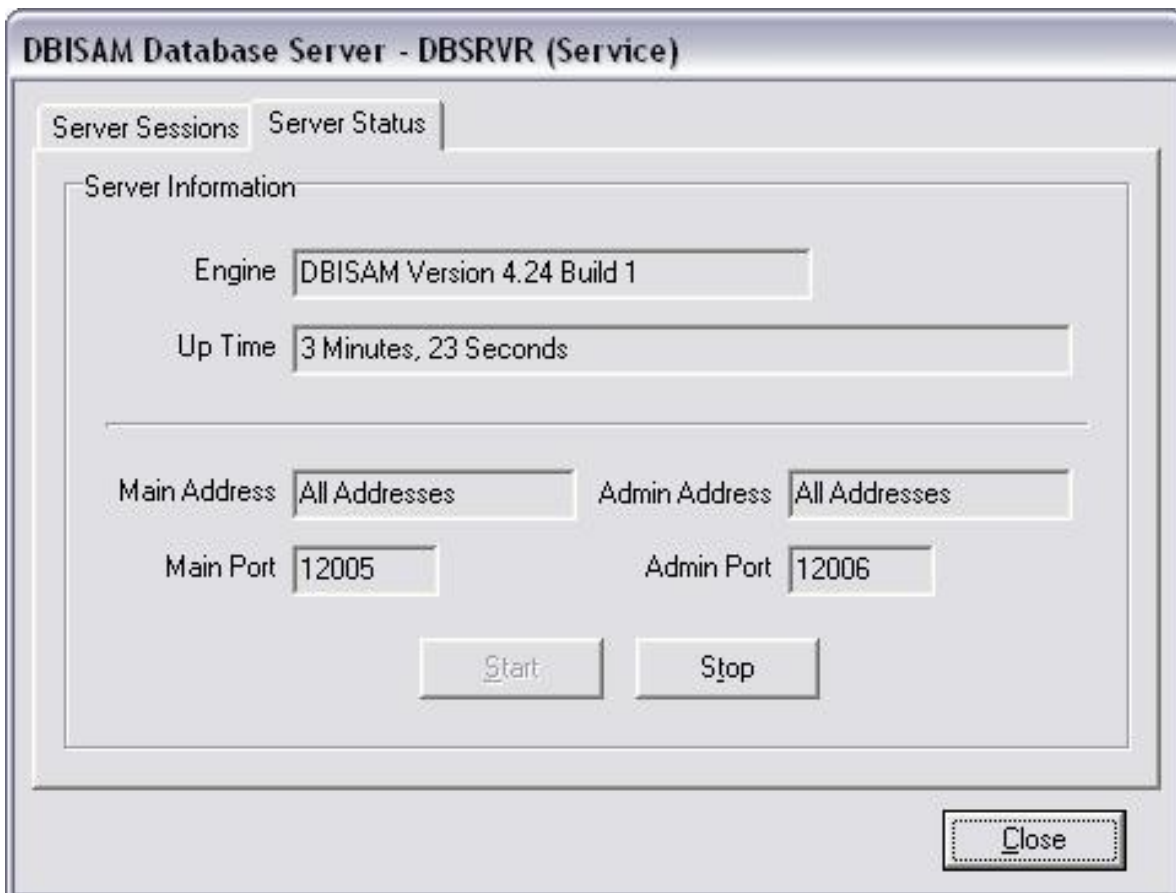
2. I start the server with this command line :

net start dbsrvr

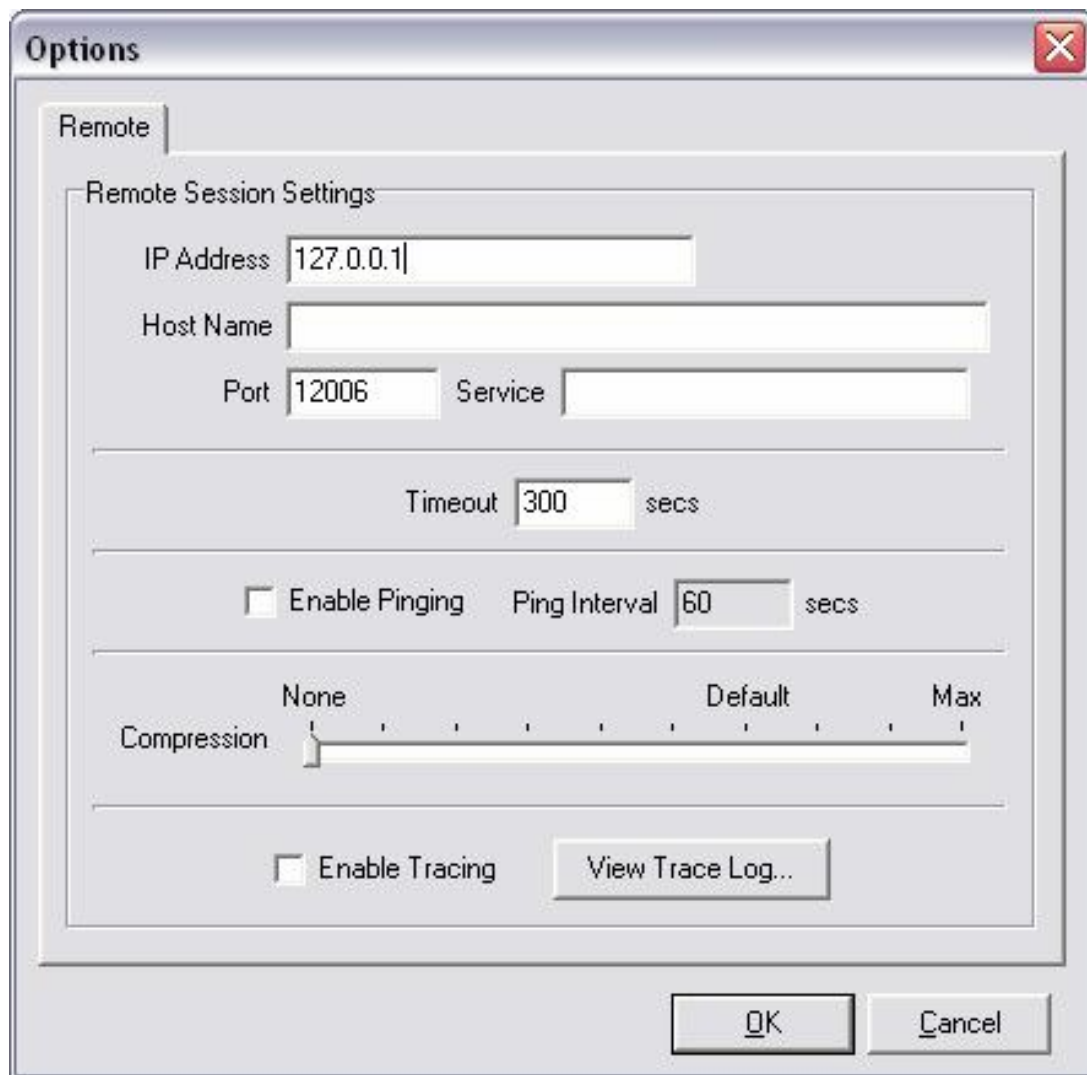
On the bottom right corner of my screen I have this informations



If I open then DBISAM Database Server - DBSRVR, I have this informations :



3. I launch the server Administration Utility and I configure the options like this

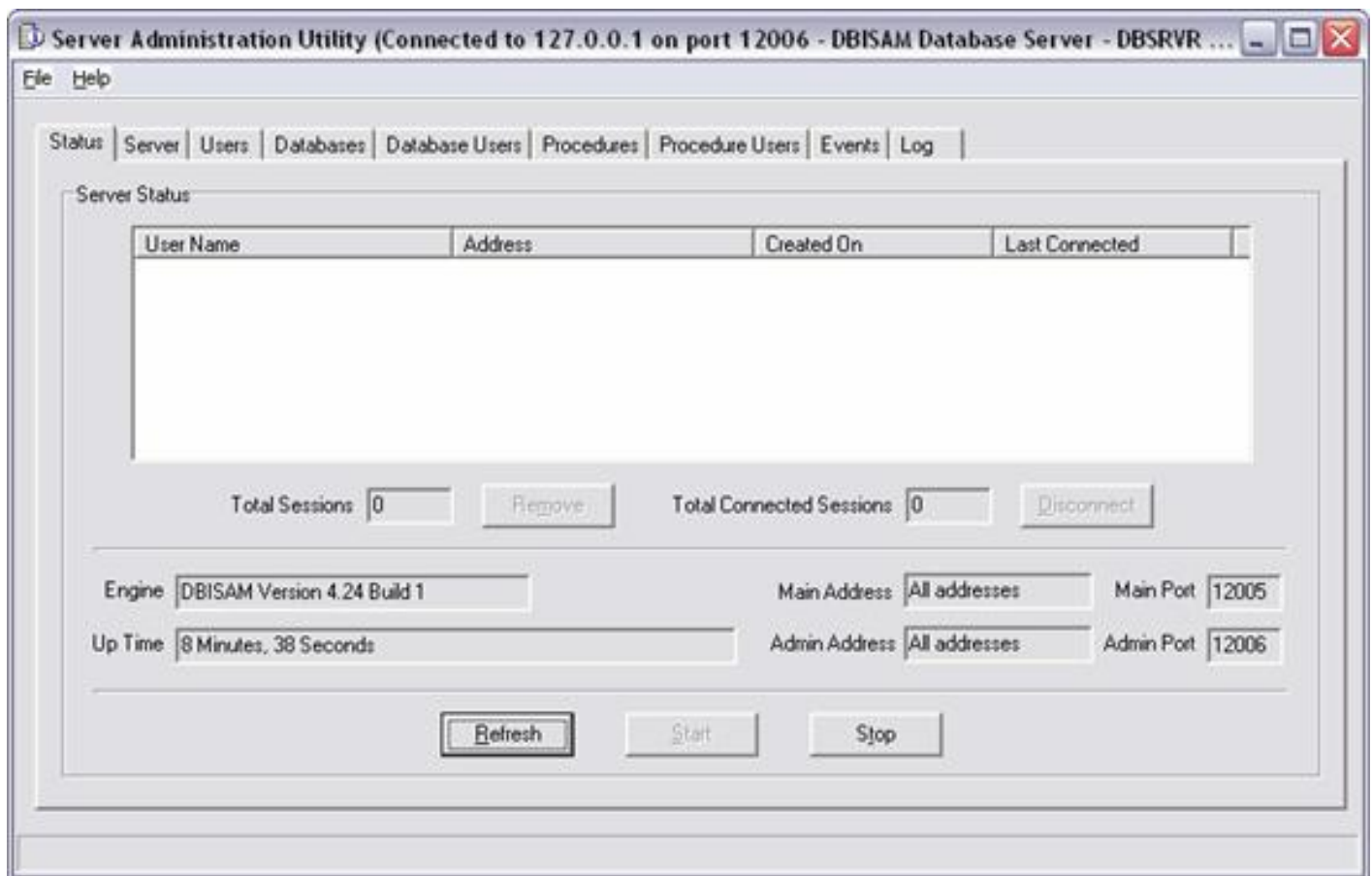


I launch the command "Login to server" and I fill the field like this

User Name : Admin

Password : DBAdmin

When I click the OK button, I have a new window



4. I logout from the server and I stop the server with this command line :  
Net stop dbsrvr

## Second test (personnal configuration)

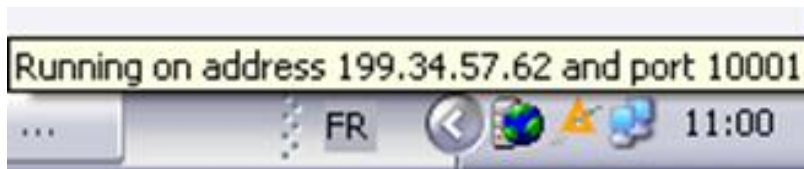
1. I create a file "dbsrvr.ini" with my own parameter.  
This is the contents of the file :

```
[Server Parameters]
Server Name=test
Server Description=Test Server Description
Server Address=199.34.57.62
Server Port=10001
Server Thread Cache Size=20
Administration Address=199.34.57.62
Administration Port=10002
Administration Thread Cache Size=4
Configuration File=Test
Configuration Password=bruno
encrypted
Encrypted Only=0
Encryption Password=bruno
No User Interface=0
Append To Log=0
Large File Support=0
```

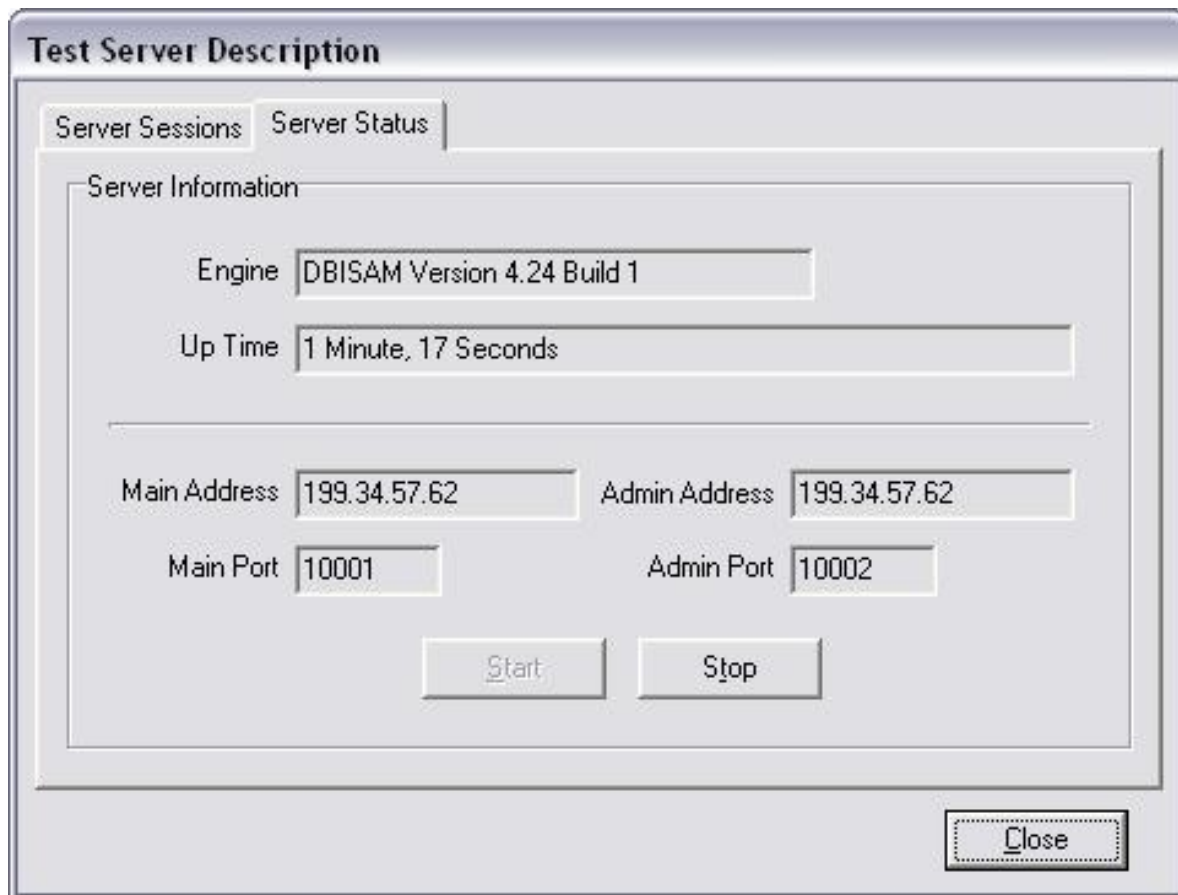
2. I start the server with this command line :

net start dbsrvr

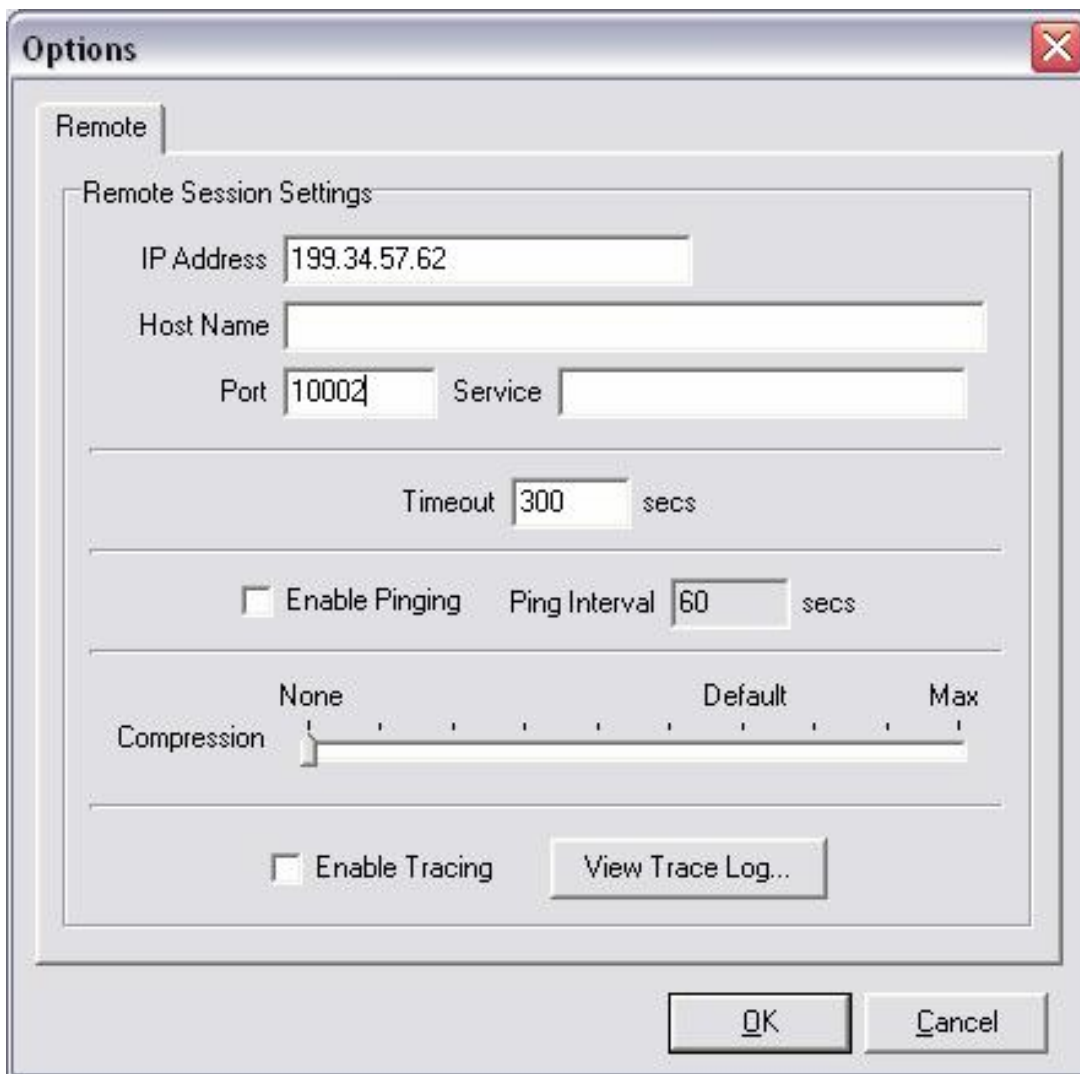
On the bottom right corner of my screen I have this informations



If I open then DBISAM Database Server - DBSRVR, I have this informations :



3. I launch the server Administration Utility and I configure the options like this

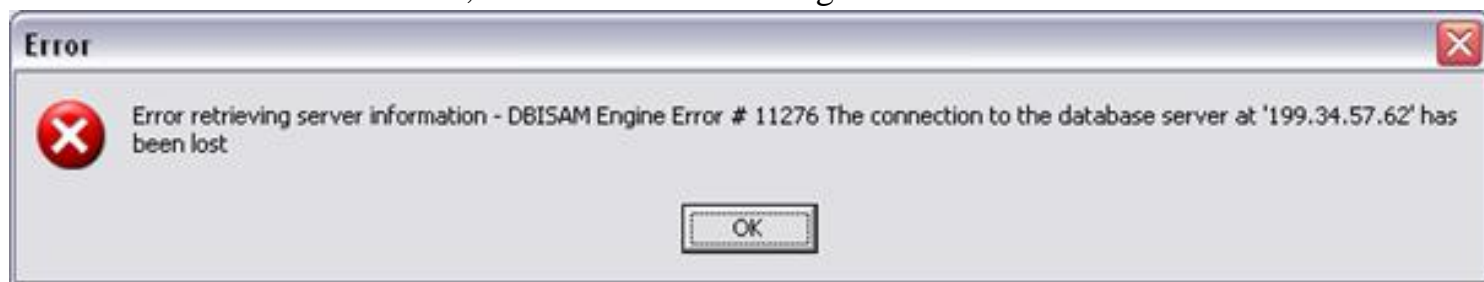


I launch the command "Login to server" and I fill the field like this

User Name : Admin

Password : DBAdmin

When I click on the OK button, I have this error message.



I think it's because I don't use "bruno" for the password like it's writing in the "dbsrvr.ini" but if I use this password, I don't know what is the user to use with this password.

## Other questions

In the "dbsrvr.ini", what is the utility of this two lines :

- Configuration Password=bruno
- Encryption Password=bruno

Can you help me to resolve my problem ?

Thanks a lot

Bruno.